



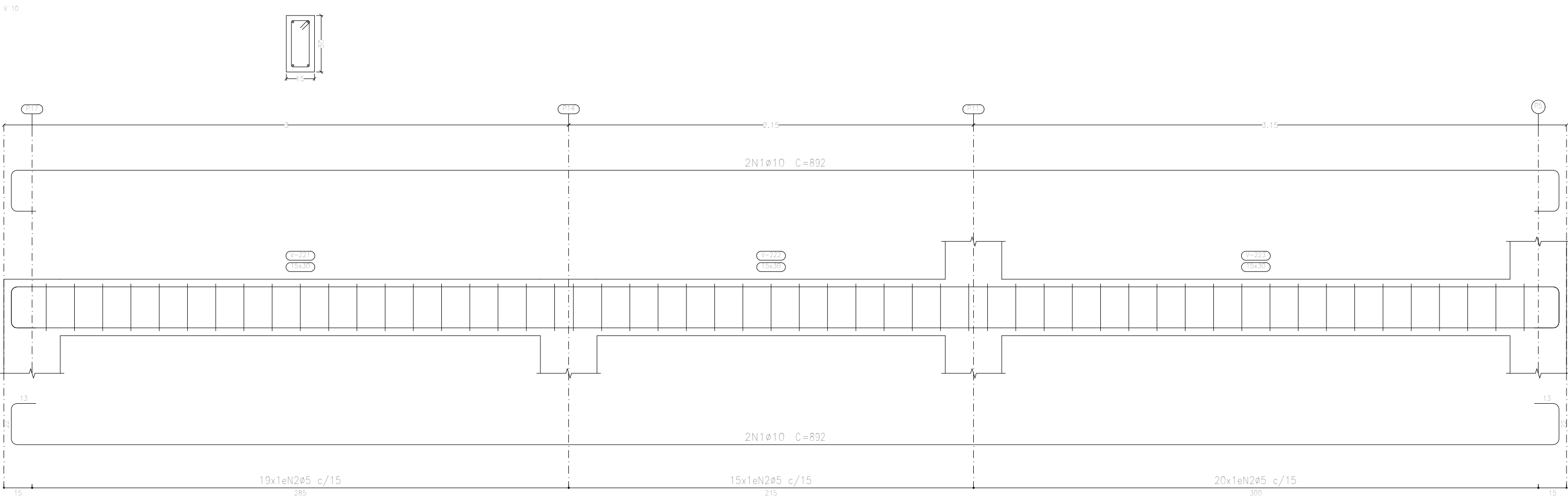
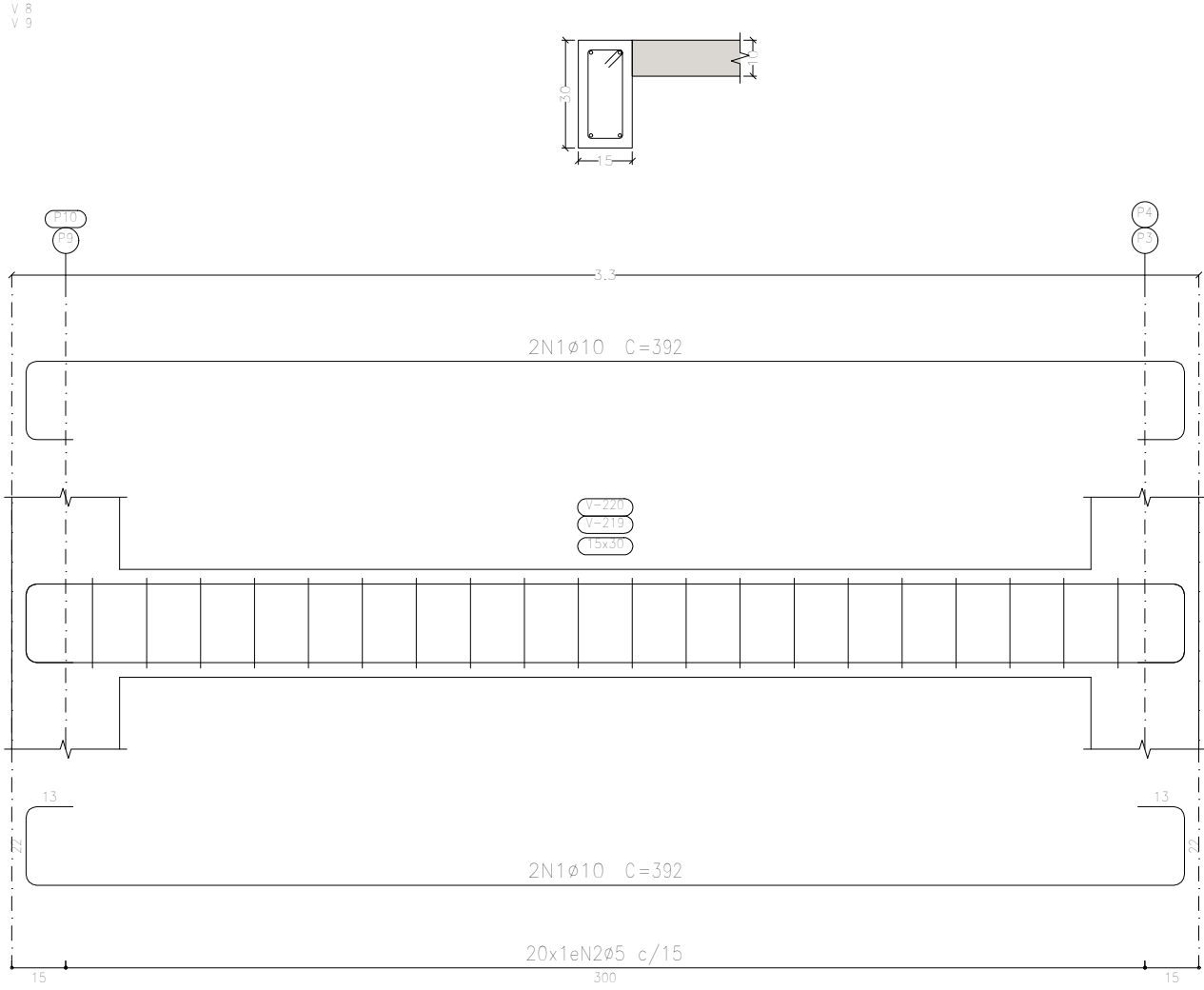


Elemento	Pos.	Diam.	Q.	Esquema (cm)	Comp. (cm)	Total (cm)	CA-50 (kg)	CA-60 (kg)
V 8=V 9	1	ø10	4		392	1568	9,7	
	2	ø5	20		78	1560		2,4
	Total+10%:						10,7 (x2): 21,4	2,6 5,2
V 10	1	ø10	4		892	3568	22,0	
	2	ø5	54		78	4212		6,6
	Total+10%:						24,2	7,3
ø5:							0,0	12,5
ø10:							45,6	0,0
Total:							45,6	12,5



Resumo Aço	Comp. total	Peso+10%	Total
Desenho de vigas	(m)	(kg)	
CA-50 ø10	366.6	248	248
CA-60 ø5	430.6	74	74
Total			322

Piso 2
Desenho de vigas
Concreto: C25, em geral
Aço das barras: CA-50 e CA-60
Aço dos estribos: CA-50 e CA-60
Escala vigas 1:20
Escala seções 1:20
Escala aberturas 1:20

Ampliação Transbordo		Data: 07/02/2024	
Local: Transbordo Municipal		Número de desenho:	
Promotor:			
Projeto Estrutural		Escala: Indicada	
Eduardo Rampanelli Tosetto Engenheiro Civil Número do CREA: 1220503037		Data: 07/02/2024	